

# LUNDY'S WILDLIFE

The island of Lundy,

off the north Devon coast, is a predominantly granite rock rising steeply out of the Atlantic Ocean. Its waters are warmed by south western currents, supporting an amazing diversity of marine life with many species being more typical of the Mediterranean region. Lundy is England's first statutory Marine Conservation Zone.

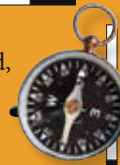
Lundy is also home to one of the largest seabird colonies in the south west and is an important stopping off point for migrating birds.

Above the water, you will find a variety of coastal habitats with rare lichens, ferns and other plants including the unique Lundy cabbage.

Below the water, you will find grey seals, corals and the occasional basking shark.

Owned by the National Trust, Lundy is financed, administered and managed by the Landmark Trust.

Lundy's wealth of natural and man-made resources makes it a place of international significance. The island's diverse terrestrial and marine habitats are home to rare species of birds, insects, marine life and plants, as well as being an important site for archaeology. Lundy attracts many thousands of visitors each year who come to experience its many unspoilt and unique qualities.



## Information and Bookings

**The Lundy Shore Office**  
The Quay, Bideford  
Devon EX39 2LY

Bookings: 01271 863636  
Administration: 01237 470074  
E: [info@lundyisland.co.uk](mailto:info@lundyisland.co.uk)  
[www.lundyisland.co.uk](http://www.lundyisland.co.uk)

**The Landmark Trust**  
Shottesbrooke, Maidenhead  
Berkshire SL6 3SW

T: 01628 825925  
F: 01628 825417  
E: [bookings@landmarktrust.org.uk](mailto:bookings@landmarktrust.org.uk)  
[www.landmarktrust.org.uk](http://www.landmarktrust.org.uk)

**Natural England**  
Renslade House  
Bonhay Road  
Exeter EX4 3AW

[www.naturalengland.org.uk](http://www.naturalengland.org.uk)

**Lundy Warden**  
Lundy  
Bristol Channel  
North Devon EX39 2LY

T: 01237 431831  
E: [warden@lundyisland.co.uk](mailto:warden@lundyisland.co.uk)

## The Landmark Trust

The Landmark Trust manages Lundy with the advice and support of the following partners:



# LUNDY WILDLIFE

*above and below the waves*



*working today for nature tomorrow*



explore

## *A colourful place*

Amongst the delights you may encounter whilst you are on Lundy are carpets of thrift and bluebells on the plateau, the colourful life in the rock pools, seabirds, resident grey seals and in the summer, dolphins, porpoises and occasional whales. Below the waves, forests of kelp and mountainous underwater scenery is adorned with marine life.

## Who's looking after the wildlife?

The majority of Lundy Island is protected nationally as a Site of Special Scientific Interest (SSSI), whilst the shore and seas around Lundy are also protected and recognised nationally as a Marine Conservation Zone and internationally as a Special Area of Conservation (SAC). Wildlife on and around Lundy is managed by the Landmark Trust, which works closely with Natural England, The National Trust and a management forum. Monitoring the condition of Lundy's environment is ongoing and there is still much to learn about interactions between nature and its environment. Work is continuing to minimise human impacts to enhance this unique environment.

## Why have a 'No Take Zone'?

The No Take Zone (NTZ) was established to further the protection of marine wildlife within the most sensitive part of the Marine Conservation Zone. Lundy is the first statutory NTZ in the UK for nature conservation purposes. No sea life of any kind including lobsters, crabs and fish can be taken from this area. An NTZ monitoring programme has been in place since 2004 and is showing benefits to wildlife including enhancement of some shellfish stocks within and around the NTZ. Similar zones around the world have worked to protect and enhance marine wildlife whilst contributing to more sustainable fisheries.



### Golden hair lichen

Like golden wire wool! This lichen thrives on clean air. Lundy has more of this lichen than anywhere else in the UK.



### Seabirds

Razorbills, guillemots, kittiwakes, Manx shearwaters and puffins only come ashore to breed. The west coast cliffs are the best place to spot seabirds perched above the crashing waves.



### Waved heath

Exposure to the full blast of the Atlantic winds means the heather on Lundy takes an unusual waved form. It flowers throughout August turning the island purple and pink.



### Mammals

Aside from the domestic sheep, Lundy is home to the native pygmy shrew, wild ponies, Soay sheep, goats and Sika deer. The deer are most commonly seen at sunrise or sunset.



### Lundy cabbage

This cabbage and its resident beetle are found nowhere else in the world. It blooms in May and June and is found on the east side of the island.

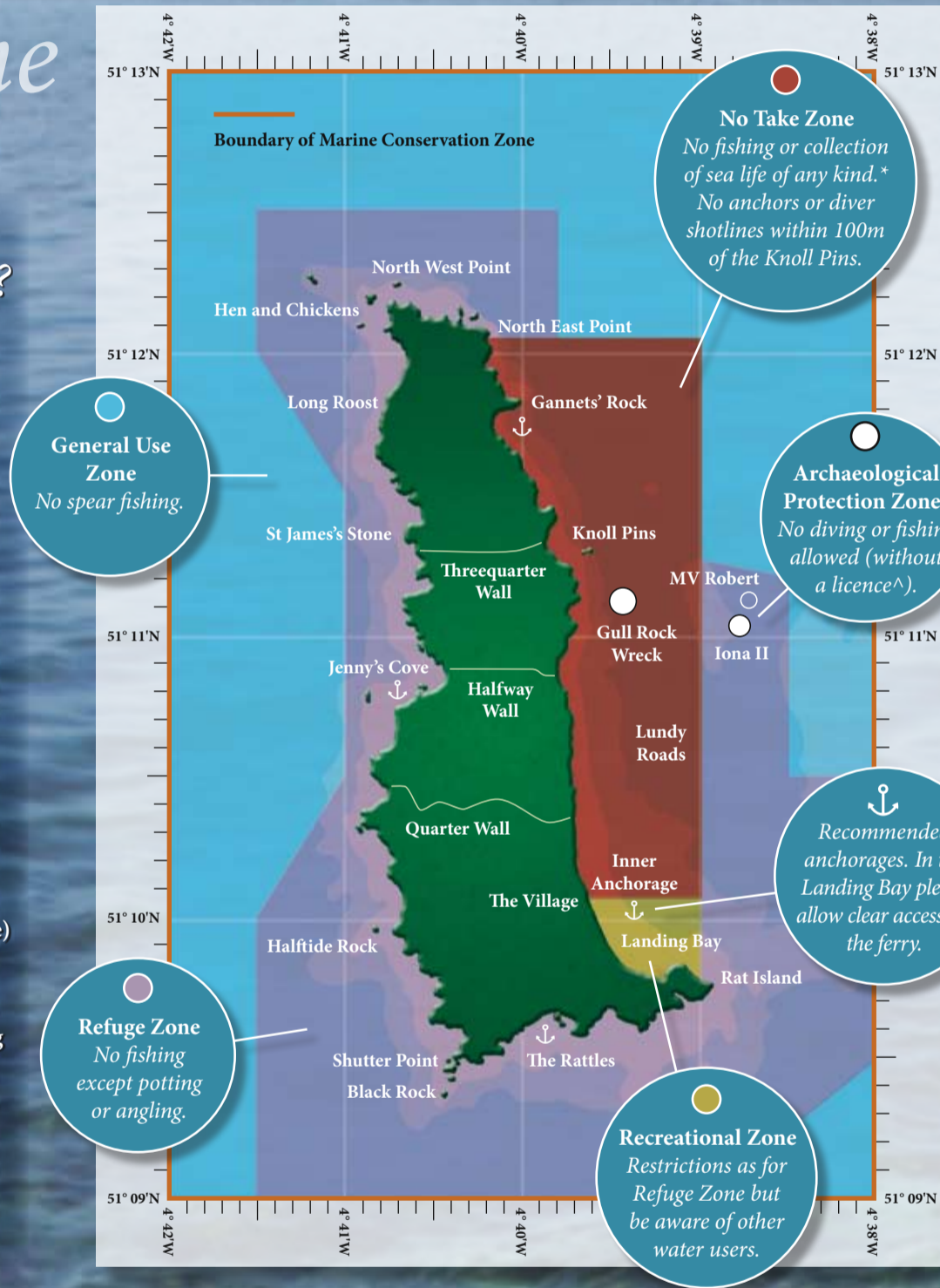
# Above the waves...

## What can you do to help conservation?

Enjoy your visit to Lundy, but remember that the conservation of the island and surrounding sea depends on the cooperation of all those who visit and use the area.

- Learn about Lundy wildlife – Join in Warden events or pick up leaflets that interest you
- Record your wildlife sightings in the LFS Log Book in the Tavern
- Don't drop ANY litter. Especially cigarette butts!
- Leave wild flowers for everyone to enjoy – don't pick any, some are protected by law!
- Lead by example – abide by the zoning scheme and the Lundy Codes of Conduct (leaflet available)
- Now that Lundy is rat free we must keep it that way. Help us by: checking your bags before arriving on Lundy – they can harbour rats! And taking all rubbish home including picnic leftovers, fruit skins and other perishables

Respect, Protect, Enjoy!



# The Lundy Marine Conservation Zone

## Zoning Scheme

The Lundy Marine Conservation Zone is used by a wide variety of people. The zoning scheme has been developed, much of which is backed up by law, to enable everyone to enjoy the reserve whilst protecting this special place.

The No Take Zone stretches north to Lat. 51 12.04N, south to Lat. 51 10.07N and east from Lundy's shores to Long. 004 39.00W.

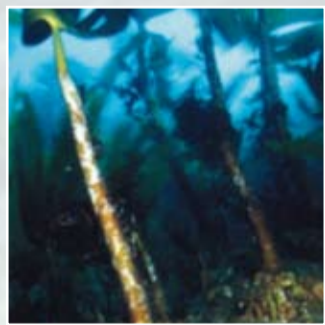
<sup>^</sup>Licence from English Heritage.  
<sup>\*</sup>Inshore Fisheries and Conservation Authority byelaw.

# Below the waves...



### Grey seals

You can't miss these inquisitive residents – you can see them all around the island swimming acrobatically through the water or on land watch them hauled out on rocks at low tide. They'll often investigate snorkellers. But be careful: they are wild animals.



### Kelp forest

Billowing in the shallow water, these underwater forests survive even the strongest storms. A variety of other creatures and seaweeds live under the canopy!



### Corals

A multi-coloured underwater garden covers the rocky ledges and pinnacles – with sunset cup corals, pink sea fans and sponges. The island has all five species of cup coral found around the UK.



### Fish

Some fish, like this stunning cuckoo wrasse, are here all year round – and they change from female to male as they get older! Basking sharks, the second largest fish in the world, are summer visitors.



### Rockpools

Lose yourself in the array of marine life to be found in the rockpools. Around Rat Island is an excellent place for rockpool rambles – why not accompany the warden and learn about the unusual creatures which inhabit our shores?